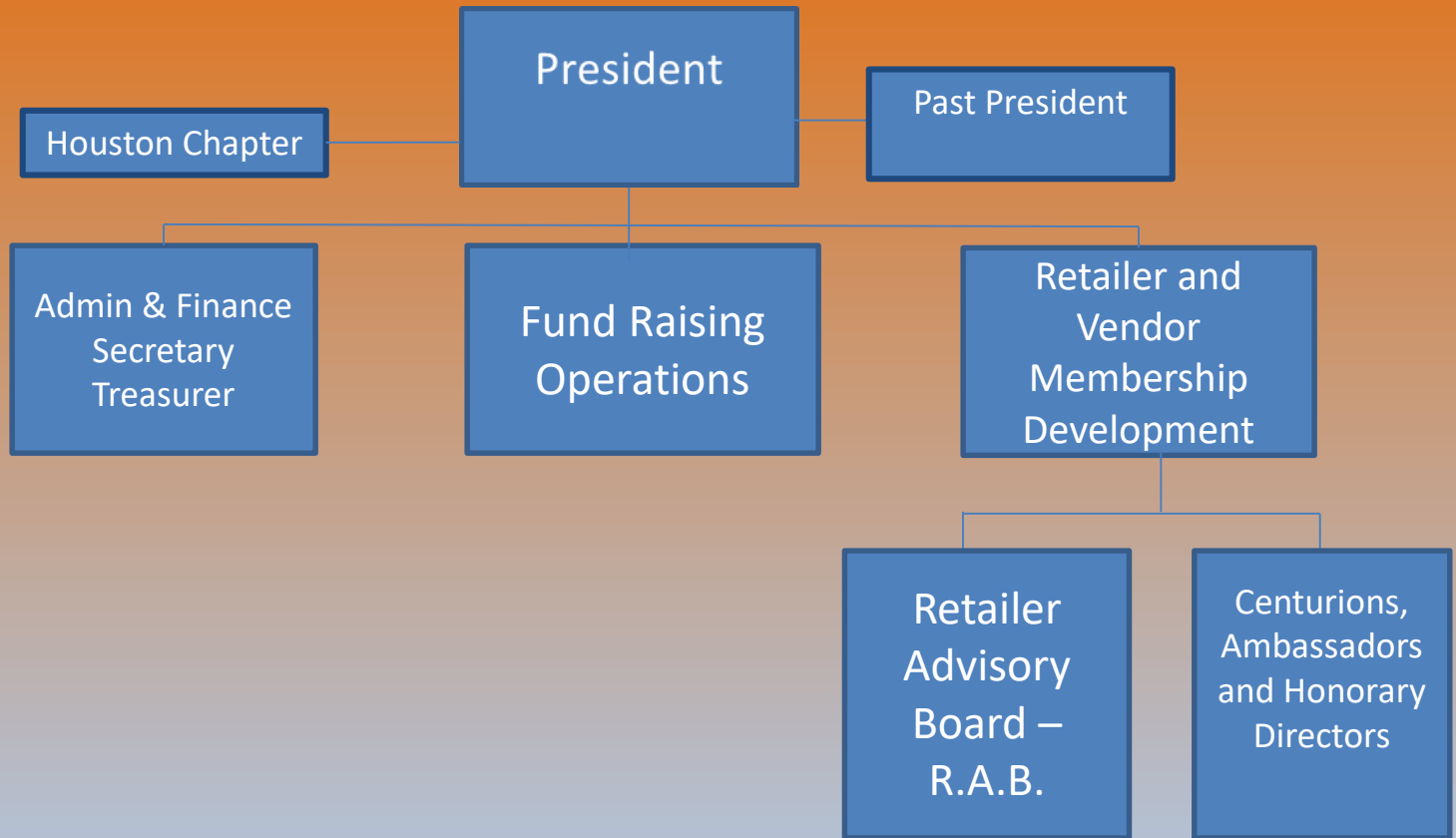
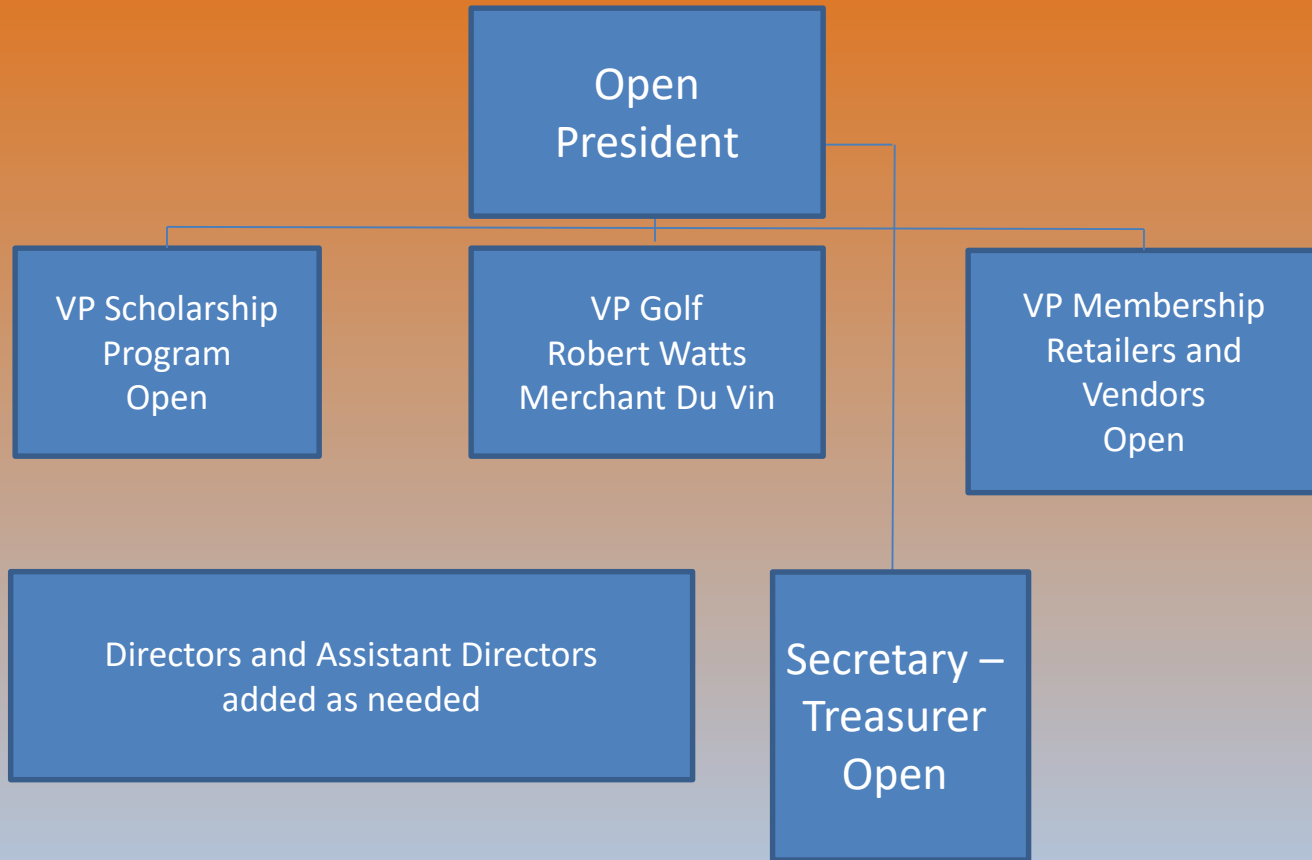


FSA-DFW TOP LEVEL ORGANIZATION CHART 2017-2019



HOUSTON CHAPTER – Reports to DFW Chapter 2017-2019



FSA-DFW Fund Raising Operations 2017 - 2019

President
Eric Becker
Frankie V's
Kitchens

Past President
Barry Green
Ben E. Keith

VP Golf Classic
Tim Berry
Community Coffee

VP Scholarship
Program
Staci Ray
TAFB

VP Fundraising Events
Cheryl Johnston
Deutsch Family Wine
and Spirits

Golf Classic
Director
Jeff Stillwell
Ben E. Keith

Scholarship
Director OPEN

Fundraising Events
Director Robert
Thomas
Independent

Asst. Golf
Director
Phil Ward Ben E.
Keith

Asst. Scholarship
Open

Asst. Event
Director Open

Dir. Friends of the Board
(Support function to Fundraising)
Jan Meade Shelby Publishing

FSA (Retailer and Vendor)
Membership Development 2017-2019

President
Eric Becker
Frankie V's
Kitchen's

Past President
Barry Green
Ben E. Keith

VP Retailer
Membership
Development
Don Perkins
Bimbo USA

Asst. Director -
Retailer
Membership
OPEN

RAB – Retailer
Advisory Board
Albertsons
Tom Thumb
Kroger
Market Street

Centurions
Nestle Nutrition
Renfro Salsas
Blue Bell Creameries
Borden Dairy
Bimbo Bakery
Flowers Bakery
Ben E. Keith
Beverages

Honorary Directors
L. Clark ,
D. Renfro
J. Burkley,
D. Guyton
JR Rivera,
B. Renfro,
M. Rakeshaw

VP Vendor
Membership
Joel Popp
Whiting-Turner
Contracting Co.

Director Vendor
Membership
Michael Fuchs
Maher Marketing

Asst. Director
Vendor
Membership
OPEN

FSA Ambassadors
S. Gaskill D. Maxey M. Morris
W. Rocco L. Porter L. Bien
C. Smith K. Alvarez G. Morgan

FSA Administration, Finance & Communications 2017-2019

Executive Director
April Fuchs

Eric Becker
President

Treasurer
Open

Secretary
Open

Executive
Management
Event coordinator
Web Changes,
Social Media,
Public Relations,
Print Graphics
Development
Photo Library

Perfect Books, LLC, Cindy Taylor ,
Bookkeeping &
Scholarship Fulfillment